

# matterhorn®

THE JACK & JAKER

COLLECTION 2010 | 2011





## ***WELCOME TO THE MATTERHORN COLLECTION***

The Matterhorn collection offers profile wear for every occasion, both work and leisure, in first class materials and classic timeless designs. Our clothing is thoughtfully created to enhance, with colour and print, the image of your company.



Softshell	4-17
-----------	------

Technical insulated jackets	18-23
-----------------------------	-------

Insulated jackets	24-29
-------------------	-------

3 in 1 system jackets	30-33
-----------------------	-------

Down jackets	34-35
--------------	-------

Business/classic jackets	36-41
--------------------------	-------

Shell jackets	42-52
---------------	-------

Technical rain wear	53-55
---------------------	-------

Pants	56-59
-------	-------

Knit wear	60-62
-----------	-------

Fleece	63-71
--------	-------

Information	72-75
-------------	-------

## H-634 H Mens softshell jacket



## MH-634 D Womens softshell jacket

**matterhorn**  
women



Softshell



Black

Red

Navy



Black

Red

Navy

### MH-634 H Mens softshell jacket

- Windproof, waterproof and breathable
- Detachable and adjustable hood
- 2 side pockets w. zip
- Sleeve pocket
- Adjustable bottom
- Outer: Softshell
- Inner: Polymesh/Nylon
- Padding: 80g
- Sizes: XS-XXXL

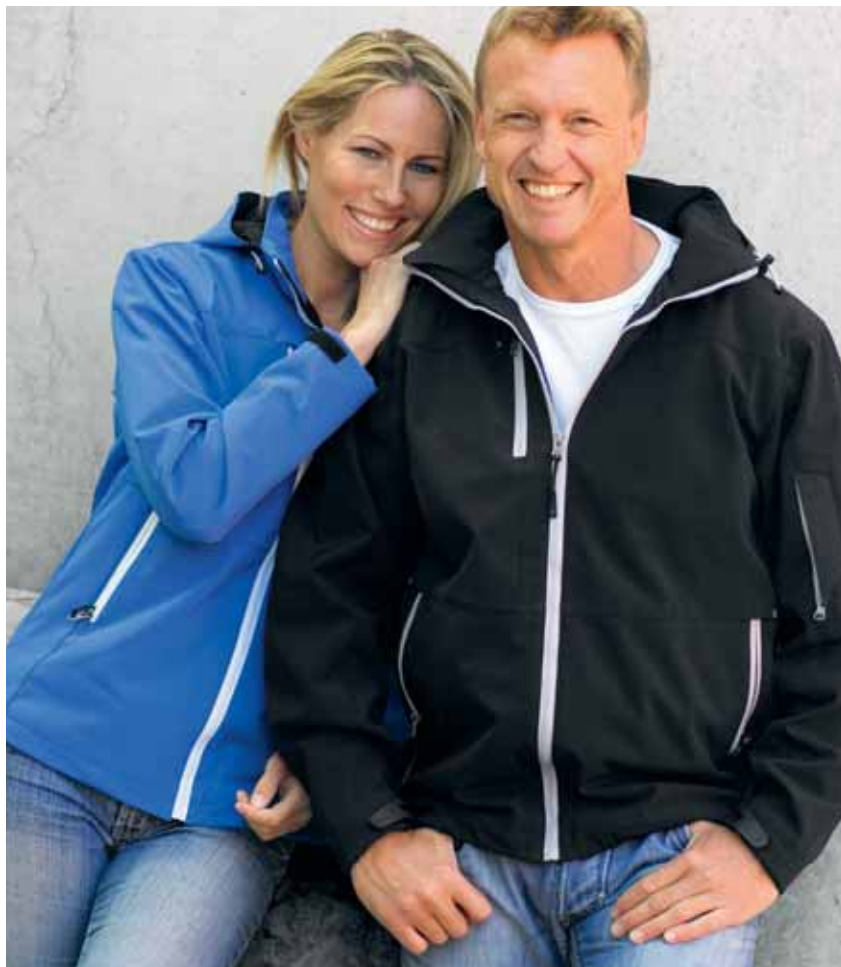
### MH-634 D Womens softshell jacket

- Windproof, waterproof and breathable
- Detachable and adjustable hood
- 2 side pockets w. zip
- Sleeve pocket
- Adjustable bottom
- Outer: Softshell
- Inner: Polymesh/Nylon
- Padding: 80g
- Sizes: 34-44









## MH-551 D Womens softshell jacket

**matterhorn**  
women



Black

Navy

Light Blue

Red

### MH-551 D Womens softshell jacket

- Windproof, waterproof and breathable
- Detachable and adjustable hood
- 2 side pockets w. zip
- Right chest pocket
- Sleeve pocket
- Adjustable bottom
- Outer: Softshell
- Sizes: 34-44

## MH-551 H Mens softshell jacket



Black

Navy

Light Blue

Red

### MH-551 H Mens softshell jacket

- Windproof, waterproof and breathable
- Detachable and adjustable hood
- 2 side pockets w. zip
- Right chest pocket
- Sleeve pocket
- Adjustable bottom
- Outer: Softshell
- Sizes: XS-XXXL

Softshell



## -938 D Womens softshell jacket

**matterhorn**  
women



Light Blue

Black

Red

Yellow

### *MH-938 D Womens softshell jacket*

- Windproof, waterproof and breathable
- Detachable and adjustable hood
- Ventilation zipper under armpit
- 2 side pockets w. zip
- Skipass and sleeve pocket
- Inside chest and mobile pocket
- Adjustable bottom
- Detachable snowprotection in waist
- Outer: Softshell
- Inner: Nylon / Mesh
- Sizes: 34-44

## MH-938 H Mens softshell jacket



Ligt Blue

Black

Red

Yellow

### *MH-938 H Mens softshell jacket*

- Windproof, waterproof and breathable
- Detachable and adjustable hood
- Ventilation zipper under armpit
- 2 side pockets w. zip
- Skipass and sleeve pocket
- Inside chest and mobile pocket
- Adjustable bottom
- Detachable snowprotection in waist
- Outer: Softshell
- Inner: Nylon / Mesh
- Sizes: XS-XXXL





## MH-162 D Womens softshell jacket

**A.B.T**  
SOFTSHELL

**matterhorn**  
women



Black



Red

### MH-162 D Womens softshell jacket

- Windproof, waterproof and breathable
- 2 side pockets w. zip
- Sleeve pocket
- Adjustable bottom
- Inside chest and mobile pocket
- Outer: A.B.T. Softshell
- Sizes: 34-44



## MH-162 H Mens softshell jacket

**A.B.T**  
SOFTSHELL



Black



Red

### MH-162 H Mens softshell jacket

- Windproof, waterproof and breathable
- 2 side pockets w. zip
- Sleeve pocket
- Adjustable bottom
- Inside chest and mobile pocket
- Outer: A.B.T. Softshell
- Sizes: XS-XXXL



Softshell





## MH-526 H Mens shell jacket

## MH-526 D Womens shell jacket

**A.B.T**  
XTREME



**A.B.T**  
XTREME

**matterhorn**  
women



Black



Red



Black



Red

### MH-526 H Mens shell jacket

- Windproof, waterproof and breathable
- All seams are taped
- Detachable and adjustable hood
- 2 side pockets w. zip
- Right chest pocket
- Sleeve pocket
- Adjustable bottom
- Outer: A.B.T. Xtreme 3-layer
- Sizes: XS-XXXXL

### MH-526 D Womens shell jacket

- Windproof, waterproof and breathable
- All seams are taped
- Detachable and adjustable hood
- 2 side pockets w. zip
- Right chest pocket
- Sleeve pocket
- Adjustable bottom
- Outer: A.B.T. Xtreme 3-layer
- Sizes: 34-44





## MH-238 D Womens softshell jacket

**matterhorn**  
women



Light Blue

Red

Black

Offwhite

### MH-238 D Womens softshell jacket

- Windproof, waterproof and breathable
- 2 side pockets w. zip
- Adjustable bottom
- Inside pocket
- Outer: Softshell
- Sizes: 34-44

## MH-238 H Mens softshell jacket



Light Blue

Red

Black

Offwhite

### MH-238 H Mens softshell jacket

- Windproof, waterproof and breathable
- 2 side pockets w. zip
- Adjustable bottom
- Inside pocket
- Outer: Softshell
- Sizes: XS-XXXL

Softshell

## MH-580 D Womens softshell vest

**matterhorn**  
women



Light Blue



Red



Black



Offwhite

### MH-580 D Womens softshell vest

- Windproof, waterproof and breathable
- 2 side pockets w. zip
- Adjustable bottom
- Inside pocket
- Outer: Softshell
- Sizes: 34-44



## MH-580 H Mens softshell vest



Light Blue



Red



Black



Offwhite

### MH-580 H Mens softshell vest

- Windproof, waterproof and breathable
- 2 side pockets w. zip
- Adjustable bottom
- Inside pocket
- Outer: Softshell
- Sizes: XS-XXXL







## MH-352 D Womens jacket

matterhorn  
women

A.B.T  
DRY SYSTEM



Black

### MH-352 D Womens jacket

- Windproof, waterproof and breathable
- All seams are taped
- Detachable and adjustable hood
- 2 side pockets w. zip
- Right chest pocket
- Adjustable bottom
- Inside chest and mobile pocket
- Outer: A.B.T.
- Inner: Polymesh/Nylon
- Padding 120g
- Sizes: 34-44

## MH-352 H Mens jacket

A.B.T  
DRY SYSTEM



Black

### MH-352 H Mens jacket

- Windproof, waterproof and breathable
- All seams are taped
- Detachable and adjustable hood
- 2 side pockets w. zip
- Right chest pocket
- Adjustable bottom
- Inside chest and mobile pocket
- Outer: A.B.T.
- Inner: Polymesh/Nylon
- Padding 120g
- Sizes: XS-XXXL



## MH-816 H Mens jacket

**A.B.T**  
XTREME



Black

### MH-816 H Mens jacket

- Windproof, waterproof and breathable
- All seams are taped
- Detachable and adjustable hood
- 2 side pockets w. zip
- Adjustable bottom
- Inside chest and mobile pocket
- Outer: A.B.T. Xtreme
- Inner: Polymesh/Nylon
- Padding 100g
- Sizes: XS-XXXL



## MH-816 D Womens jacket

**A.B.T**  
XTREME

**matterhorn**  
women ♀



Black

### MH-816 D Womens jacket

- Windproof, waterproof and breathable
- All seams are taped
- Detachable and adjustable hood
- 2 side pockets w. zip
- Adjustable bottom
- Inside chest and mobile pocket
- Outer: A.B.T. Xtreme
- Inner: Polymesh/Nylon
- Padding 100g
- Sizes: 34-44



Technical insulated jackets

## MH-212 H Mens A.B.T. jacket



Black



Grey



Red

### MH-212 H Mens A.B.T. jacket

- Windproof, waterproof and breathable
- All seams are taped
- 2 side pockets w. zip
- Right chest pocket
- Sleeve pocket
- Inside chest and mobile pocket
- Adjustable bottom
- Outer: A.B.T.
- Inner: Nylon/Microfleece
- Sizes: XS-XXXL







## MH-212 D Womens A.B.T. jacket



Black



Grey



Red

### MH-212 D Womens A.B.T. jacket

- Windproof, waterproof and breathable
- All seams are taped
- 2 side pockets w. zip
- Right chest pocket
- Sleeve pocket
- Inside chest and mobile pocket
- Adjustable bottom
- Outer: A.B.T.
- Inner: Nylon/Microfleece
- Sizes: 34-44



## MH-424 Parka



Black



Red

### MH-424 Parka

- Windproof and water resistant
- Detachable and adjustable hood
- 2 side pockets
- Adjustable bottom and waist
- Inside chest and mobile pocket
- Outer: Ottoman w. PU-Coating
- Inner: Nylon
- Padding 180g
- Sizes: XS-XXXXL



## MH-913 Parka



Black



Red



Navy

### MH-913 Parka

- Windproof and water resistant
- Detachable and adjustable hood
- 2 side pockets / 1 chest pocket
- Slits with buttons on sides
- Adjustable bottom and waist
- Inside chest and mobile pocket
- Outer: Ottoman w. PU-Coating
- Inner: Nylon
- Padding 120g
- Sizes: XS-XXXL
- Sizes. 140 cl, 160 cl



Insulated jackets





## MH-118 D Womens jacket



Khaki

Navy

Red



Royal

Yellow

Black

### MH-118 D Womens jacket

- Windproof and water resistant
- Concealed hood
- 2 side pockets w. zip
- Sleeve pocket with reflex
- Adjustable bottom
- Inside chest and mobile pocket
- Outer: Ottoman w. PU-Coating
- Inner: Nylon
- Padding 120g
- Sizes: 34-44

## MH-118 H Mens jacket



Khaki

Navy

Red



Royal

Yellow

Black

### MH-118 H Mens jacket

- Windproof and water resistant
- Concealed hood
- 2 side pockets w. zip
- Sleeve pocket with reflex
- Adjustable bottom
- Inside chest and mobile pocket
- Outer: Ottoman w. PU-Coating
- Inner: Nylon
- Padding 120g
- Sizes: XS-XXXL



## NW-454 Jacket



Green



Navy



Red



Black



Royal

### NW-454 Jacket

- Windproof and water resistant
- 2 side pockets w. zip
- Adjustable bottom
- Inside chest and mobile pocket
- Outer: Taslan w. PU-Coating
- Inner: Fleece
- Sizes: S-XXXL
- Sizes. 120/130 cl, 140/150 cl, 160/170 cl



## MH-835 Taslan body warmer



Navy

Black

Red

Royal

### MH-835 Taslan body warmer

- Windproof and water resistant
- 2 side pockets w. zip
- Inside chest pocket
- Adjustable bottom
- Outer: Taslan
- Inner: Fleece
- Sizes: XS-XXXL

## MH-273 Three-in-one jacket



Khaki



Navy



Royal



Red



Black

### MH-273 Three-in-one jacket

- Windproof, waterproof and breathable
- Removable inner fleecejacket
- All seams are taped
- Consealed hood
- 2 side pockets w. zip
- Inside chest and mobile pocket
- Adjustable bottom
- Outer: A.B.T.
- Inner: Nylon and removable fleece
- Sizes: XS-XXXL



## MH-153 Three-in-one jacket



Black



Khaki



Red

### MH-153 Three-in-one jacket

- Removable inner fleecejacket
- All seams are taped
- Detachable and adjustable hood
- 2 side pockets w. zip
- 2 chest pockets w. zip
- Inside chest and mobile pocket
- Adjustable bottom and waist
- Outer: A.B.T.
- Inner: Nylon and removable fleece
- Sizes: XS-XXXL



## MH-107 Three-in-one jacket



Yellow

Navy

Red

Royal



Antracite

Black

Green

### MH-107 Three-in-one jacket

- Windproof, waterproof and breathable
- Removable inner fleecejacket
- All seams are taped
- Detachable and adjustable hood
- 2 side pockets w. zip
- 2 chest pockets w. zip
- Inside chest and mobile pocket
- Adjustable bottom and waist
- Outer: Finetex
- Inner: Nylon / removable fleece
- Sizes: XS-XXXL

## NW-599 Three-in-one jacket



Yellow

Navy

Royal



Red

Black

### NW-599 Three-in-one jacket

- Windproof and water resistant
- Removable inner fleecejacket
- Detachable and adjustable hood
- 2 side pockets w. zip
- 2 chest pockets w. zip
- Inside chest and mobile pocket
- Adjustable bottom and waist
- Outer: Taslan
- Inner: Nylon / removable fleece
- Sizes: XS-XXXL





## MH-302 Expedition jacket



Antracite



Black



Yellow

### MH-302 Expedition jacket

- Windproof, waterproof and breathable
- All seams are taped
- Removable innerjacket in down
- 2 side pockets w. zip
- 4 chest pockets w. zip
- Inside chest and mobile pocket
- Adjustable bottom and waist
- Outer: Extra durable Finetex
- Inner: Nylon/Mesh
- Innerjacket: 80/20 down
- Sizes: XS-XXXL



## MH-088 Down parka



Black



Red

### MH-088 Down parka

- Wind and water resistant
- Down proof coated polyamide material
- 2 side pockets
- 2 chest pockets w. zip
- Inside chest and mobile pocket
- Sleeve pocket with reflex
- Imitation fur on hood
- Adjustable bottom and waist
- Outer: Extra durable ribstop nylon
- Inner: Nylon with 80/20 down
- Sizes: XS-XXXL





---

## MH-510 Business jacket

---



Black

### MH-510 Business jacket

- Windproof, waterproof and breathable
- Detachable and adjustable hood
- Consealed hood
- 2 side pockets
- 2 chest pockets
- Inside chest and mobile pocket
- Adjustable bottom and waist
- Outer: Taslan
- Inner: Nylon
- Sizes: XS-XXXL



## MH-773 Business jacket



Black

### MH-773 Business jacket

- Windproof, waterproof and breathable
- Detachable and adjustable hood
- Consealed hood
- 2 side pockets
- 2 chest pockets
- Inside chest and mobile pocket
- Adjustable bottom
- Outer: Taslan
- Inner: Nylon
- Padding 100g
- Sizes: XS-XXXL



## *MH-572 H Mens jacket*



Black

### *MH-572 H Mens jacket*

- Wind and water resistant
- 2 side pockets w. zip
- Inside chest and mobile pocket
- Adjustable bottom
- Outer: Dewspo polyamid
- Inner: Nylon
- Padding: 100g
- Sizes: XS-XXXL



## MH-572 D Womens jacket

**matterhorn**  
women



Black

### MH-572 D Womens jacket

- Wind and water resistant
- 2 side pockets w. zip
- Inside chest and mobile pocket
- Adjustable bottom
- Outer: Dewspo polyamid
- Inner: Nylon
- Padding: 100g
- Sizes: 34-44





## MH-950 Parka



Black

### MH-950 Parka

- Windproof and water resistant
- Detachable and adjustable hood
- 2 side pockets
- 2 chest pockets
- Adjustable bottom and waist
- Inside chest and mobile pocket
- Outer: Heavy cotton twill w. PU-Coating
- Inner: Nylon
- Padding 120g
- Sizes: XS-XXXL



## MH-608 H & D Twill jacket



Khaki



Black

### MH-608 H & D Twill jacket

- Windproof and water resistant
- 2 side pockets
- Adjustable bottom
- Inside chest and mobile pocket
- Outer: Cotton twill w. PU-Coating
- Inner: Nylon
- Padding 80g
- Sizes: 34-44
- Sizes: XS-XXXL



## MH-437 H Mens shell jacket



Black



Red



Marin

### MH-437 H Mens shell jacket

- Windproof, waterproof and breathable
- All seams are taped
- 2 side pockets w. zip
- Sleeve pocket
- Adjustable bottom
- Detachable and adjustable hood
- Outer: A.B.T. Xtreme 3-layer
- Sizes: XS-XXXL



## MH-437 D Womens shell jacket



Marin



Black



Red

### MH-437 D Womens shell jacket

- Windproof, waterproof and breathable
- All seams are taped
- 2 side pockets w. zip
- Sleeve pocket
- Adjustable bottom
- Detachable and adjustable hood
- Outer: A.B.T. Xtreme 3-layer
- Sizes: 34-44



Shell jackets

## MH-502 H Mens shell jacket



Black

### MH-502 H Mens shell jacket

- Windproof, waterproof and breathable
- All seams are taped
- 2 side pockets w. water proof zip
- Sleeve pocket
- Adjustable bottom
- Adjustable hood
- Outer: A.B.T. Xtreme 3-layer
- Sizes: XS-XXXL



## MH-502 D Womens shell jacket



Black

### MH-502 D Womens shell jacket

- Windproof, waterproof and breathable
- All seams are taped
- 2 side pockets w. water proof zip
- Sleeve pocket
- Adjustable bottom
- Adjustable hood
- Outer: A.B.T. Xtreme 3-layer
- Sizes: 34-44



## MH-461 D Womens jacket

**A.B.T.**  
DRY SYSTEM

**matterhorn**  
women ♀



Royal



Red



Black

### MH-461 D Womens jacket

- Windproof, waterproof and breathable
- All seams are taped
- Detachable and adjustable hood
- 2 side pockets w. zip
- Inside chest and mobile pocket
- Adjustable bottom
- Outer: A.B.T.
- Inner: Nylon/Mesh
- Sizes: 34-44





## MH-461 H Mens jacket



A.B.T.  
DRY SYSTEM



Royal



Red



Black

Shell jackets

### MH-461 H Mens jacket

- Windproof, waterproof and breathable
- All seams are taped
- Detachable and adjustable hood
- 2 side pockets w. zip
- Inside chest and mobile pocket
- Adjustable bottom
- Outer: A.B.T.
- Inner: Nylon/Mesh
- Sizes: XS-XXXL





## MH-170 H Mens jacket

**A.B.T**  
XTREME



Skyblue

Red

Black

### MH-170 H Mens jacket

- Windproof, waterproof and breathable
- All seams are taped
- Detachable and adjustable hood
- 2 side pockets w. zip
- Left chest pocket w. waterproof zip.
- Adjustable bottom
- Outer: A.B.T. Xtreme
- Inner: Mesh/Nylon
- Sizes: XS-XXXL

## MH-170 D Womens jacket

**A.B.T**  
XTREME

**matterhorn**  
women



Skyblue

Red

Black

### MH-170 D Womens jacket

- Windproof, waterproof and breathable
- All seams are taped
- Detachable and adjustable hood
- 2 side pockets w. zip
- Left chest pocket w. waterproof zip.
- Adjustable bottom
- Outer: A.B.T. Xtreme
- Inner: Mesh/Nylon
- Sizes: 34-44

Shell jackets





## MH-645 H Mens jacket

## MH-645 D Womens jacket



matterhorn  
women



Black

Navy

Red

Khaki



Black

Khaki

Red

### MH-645 H Mens jacket

- Windproof and water resistant
- Detachable and adjustable hood
- 2 side pockets w. zip
- Sleeve pocket with reflex
- Inside chest and mobile pocket
- Adjustable bottom
- Outer: Ottoman w. PU-Coating
- Inner: Nylon
- Sizes: XS-XXXL

### MH-645 D Womens jacket

- Windproof and water resistant
- Detachable and adjustable hood
- 2 side pockets w. zip
- Sleeve pocket with reflex
- Inside chest and mobile pocket
- Adjustable bottom
- Outer: Ottoman w. PU-Coating
- Inner: Nylon
- Sizes: 34-44



## MH-629 Finetex jacket



Royal



Red



Navy



Black



Yellow

### MH-629 Finetex jacket

- Windproof, waterproof and breathable
- All seams are taped
- Detachable and adjustable hood
- 2 side pockets w. zip
- 2 chest pockets w. zip
- Inside chest and mobile pocket
- Adjustable bottom and waist
- Outer: Finetex
- Inner: Nylon/Mesh
- Sizes: XS-XXL



## MH-327 All weather set



Royal/Black

Red/Black

Navy/Navy



Khaki/Black

Antracite/Black

Black/Black

### MH-327 All weather set

- Windproof, waterproof and breathable
- All seams are taped
- Concealed hood
- 2 side pockets w. zip
- Adjustable bottom
- Trousers w. 2 pockets
- Inside chest and mobile pocket
- Outer: A.B.T.
- Inner: Nylon/Mesh
- Sizes: XS-XXXL









## MH-267 H Mens rain set



Antracite



Red



### MH-267 H Mens rain set

- Windproof, waterproof and breathable
- All seams are taped
- Detachable and adjustable hood
- 2 side pockets w. zip
- 1 inside pocket
- Adjustable bottom
- Trousers w. 3 pockets
- Outer: Finetex
- Inner: Nylon/Mesh
- Sizes: XS-XXXL

## MH-267 D Womens rain set



matterhorn  
women



Antracite



Red



### MH-267 D Womens rain set

- Windproof, waterproof and breathable
- All seams are taped
- Detachable and adjustable hood
- 2 side pockets w. zip
- 1 inside pocket
- Adjustable bottom
- Trousers w. 3 pockets
- Outer: Finetex
- Inner: Nylon/Mesh
- Sizes: 34-44



**matterhorn**  
**women** ♀



Antracite

### *MH-072 Softshell pants*

- Windproof, waterproof and breathable
- 2 front pockets w. zip
- Pocket at left leg
- Zippers at ankles
- Elastic snow trap at the cuffs
- Outer: Softshell
- Inner: Nylon
- Sizes: XS-XXXL / Sizes: 34-44



### MH-914 Ski pants

- Windproof and water resistant
- 2 front pockets
- Elastic snow trap and velcro at the cuffs
- Outer: Ottoman w. PU-Coating
- Inner: Nylon
- Padding: 60g
- Sizes: XS-XXXL



Black



### MH-062 Ski pants

- Windproof, waterproof and breathable
- All seams are taped
- 2 front pockets w. zip
- Elastic snow trap and zippers at the cuffs
- Outer: Ottoman Finetex
- Inner: Nylon
- Padding: 40g
- Sizes: XS-XXL



Navy



Black



### MH-055 Womens ski pants

- Windproof, waterproof and breathable
- All seams are taped
- 2 front pockets w. zip
- Elastic snow trap and zippers at the cuffs
- Outer: Ottoman Finetex
- Inner: Nylon
- Padding: 40g
- Sizes: 34-44



**matterhorn**  **women**



Black



### MH-418 Ski pants

- Windproof, waterproof and breathable
- All seams are taped
- Elastic snow trap at the cuffs
- Zippers down the whole legs
- Outer: Ottoman Finetex
- Inner: Nylon
- Padding 40g
- Sizes: XS-XXXL



Black



## MH-649 Finetex pants



Black



Navy

### MH-649 Finetex pants

- Windproof, waterproof and breathable
- All seams are taped
- 2 front pockets
- Velcro at ankles
- Outer: Finetex
- Inner: Nylon
- Sizes: XS-XXL



## MH-335 Pants



Black

### MH-335 Pants

- Windproof and water resistant
- 2 front pockets
- Zippers at ankles
- Outer: Ottoman w. PU-Coating
- Inner: Nylon
- Padding: 60g
- Sizes: XXS-XXXL

## MH-040 A.B.T. pants



Black

### MH-040 A.B.T. pants

- Windproof, waterproof and breathable
- All seams are taped
- 2 front pockets
- Pocket at left leg
- Zippers at ankles
- Outer: A.B.T
- Inner: Nylon
- Sizes: XS-XXXL





## *MH-475 H Mens French rib jacket*



Black

### *MH-475 H Mens French rib jacket*

- French rib with microfleece
- 2 side pockets w. zip
- Outer: French rib 100% cotton
- Inner: Microfleece
- Sizes: XS-XXXL

## *MH-475 D Womens French rib jacket*



**matterhorn**  
**women** 



Black

### *MH-475 D Womens French rib jacket*

- French rib with microfleece
- 2 side pockets w. zip
- Outer: French rib 100% cotton
- Inner: Microfleece
- Sizes: 34-44

Knit wear

## MH-615 Wind sweater



Light Blue



Black



Navy

### MH-615 Wind sweater

- Outer: 50% Cotton, 50% Acryl
- Inner: Micropolyester
- Sizes: XS-XXXL



## *MH-290 Pile fleece jacket*



Black

Fleece

### *MH-290 Pile fleece jacket*

- Pile fleece
- 2 side pockets w. zip
- Outer: Pile fleece/Microfleece
- Inner: Nylon
- Sizes: XS-XXXL

## MH-531 Microfleece jacket



Red



Navy



Black



Khaki



Skyblue

### MH-531 Microfleece jacket

- Antipilling microfleece
- 2 side pockets w. zip
- 1 sleeve pocket w. zip
- Outer: Microfleece 300g
- Sizes: XS-XXXL



## *MH-856 Fleece jacket with lining*



Black

Khaki

Navy

Red

### *MH-856 Fleece jacket with lining*

- Antipilling microfleece
- 2 side pockets w. zip
- Outer: Microfleece 300g
- Inner: Nylon
- Sizes: XS-XXXL



Fleece





## MH-383 H Mens fleece jacket



Navy

Red

Black

### MH-383 H Mens fleece jacket

- Antipilling microfleece
- 2 side pockets w. zip
- Outer: Microfleece 300g
- Sizes: XS-XXXL
- 130/140 cl, 150/160 cl

## MH-383 D Womens fleece jacket



Navy

Red

Black

### MH-383 D Womens fleece jacket

- Antipilling microfleece
- 2 side pockets w. zip
- Outer: Microfleece 300g
- Sizes: 34-44





## *MH-694 H Mens fleece jacket*

## *MH-694 D Womens fleece jacket*

**matterhorn**  
**women** ♀



Black



Black

### *MH-694 H Mens fleece jacket*

- Antipilling microfleece
- 2 side pockets w. zip
- Outer: Microfleece 220 g
- Sizes: XS-XXXL

### *MH-694 D Womens fleece jacket*

- Antipilling microfleece
- 2 side pockets w. zip
- Outer: Microfleece 220g
- Sizes: 34-44

Fleece

## MH-146 Windproof fleece jacket



**DEFENDER**  
WINDBLOCKER



Antracite

Navy

Red

Black

### MH-146 Windproof fleece jacket

- Windproof and breathable
- 2 side pockets w. zip
- Outer: Microfleece
- Inner: Wind laminate
- Sizes: XS-XXL







## MH-177 Windproof fleece vest

DEFENDER  
WINDBLOCKER



Antracite



Black



Royal



Offwhite

Fleece

### MH-177 Windproof fleece vest

- Windproof and breathable
- 2 side pockets w. zip
- Outer: Microfleece
- Inner: Wind laminate
- Sizes: S-XXL

## CODE OF CONDUKT

At Matterhorn we respect that the legal standards set by different countries as well as international organizations with regard to human rights are important for both customers and suppliers. Matterhorn takes responsibility for its operations in Asia and we make our ethical and moral standpoints clear at all times as we realize the effect they have on our long-term business development. Our code of conduct applies in all factories involved with the manufacture of our products. While being aware of the different legal and cultural conditions for factories at different locations, the Code of Conduct states the basic standards that all factories have to conform to if they want to do business with Matterhorn. The Code of Conduct is an agreement that Matterhorn suppliers are obliged to enter into and follow. It states that the suppliers must work according to the law and also allow regular controls of conditions and data at their factories.

### THE CODE OF CONDUKT CONTAINS:

- Employment is freely chosen (i.e. No forced labour)
- There is no discrimination of employment.
- Child labour is prohibited
- Freedom of association
- Minimum salaries are guaranteed
- Working hours are not excessive
- Decent working conditions (Hygiene, health, etc)

### THE ENVIRONMENTAL ASPECT

Production has an enormous impact on the environment, therefore we work closely with our suppliers to enforce the restrictions decided on in the European Textile Importers Chemical Guide and our Code of Conduct contains these restrictions. Our suppliers must insure that their suppliers strive to decrease the use of virgin raw material, the discharge of unnatural materials, waste, air-pollution and the consumption of energy and fresh water. Matterhorn has purchase and production partners in China and Bangladesh. These partners ensure that the suppliers live up to Matterhorn's demands when it comes to quality and the environment. Our partners send production samples to independent institutions, such as I.T.S. and S.G.S., to make sure that the products do not contain any forbidden material. Matterhorn makes continuous efforts towards improving environmental effects in its production.

## WORKING ENVIRONMENT

For Matterhorn the working conditions and treatment of employees by our suppliers is included in the term environment. Our production partner personnel perform continuous checks to ensure, for example, that no products are made by child workers. Matterhorn's suppliers have signed an agreement that no children are employed in the production process, in accordance with the United Nations Conventions on Rights of the Child\*. Our purchasing department makes active efforts to ensure satisfactory working conditions in the factories with which we do business. Although our partners make extensive checks, it is difficult to guarantee that working conditions are always satisfactory. Spot-checks are made to ensure that no children are involved in the production.

\* United Nations Convention on the Rights of the Child, article 32:1, states: "...Parties recognize the right of the child to be protected from economic exploitation and from performing any work that is likely to be hazardous or to interfere with the child's education, or to be harmful to the child's health or psychological, mental, moral, spiritual or social development."



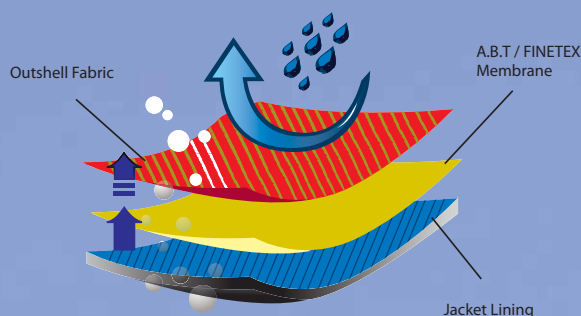
Matterhorn has received a certificate of environmental approval from Alingsås Local Authority. In order to receive this certification a company has to have an approved environmental management system that must adhere to strict criteria.

An Environmental Management System denotes that the company has: an accepted environmental policy, an environmental agenda with specific goals, an environmental officer, written routines for environmental controls for purchases, routines for informing all personnel about the company's environmental work, rendered accounts for all chemical usage and that all personnel have received at least four hours of instruction in environmental concerns.

A company can receive a certification only if at least 75 % of the criteria in an appointed checklist are fulfilled. The suggested measures in the checklist have positive effects on the environment and are practical. The areas covered by the checklist are as follows: Environmental Management, Premises, Personnel, Offices, Waste Management, Transport and Chemical Usage.



## TECHNICAL INFORMATION



A.B.T. Advanced Breathing Technology is a breathable material that is both light and flexible as well as wind and water proof. The outer layer of the material has a membrane consisting of millions of tiny pores. These pores are small enough to prevent water from penetrating the garment but large enough for the water vapour from condensation and perspiration to escape.



This material allows condensation and perspiration to escape whilst remaining both water and wind proof. The impregnated outer layer repels water droplets, thus allowing the garment to retain the optimum "breathability". Finetex is a membrane, consisting of millions of tiny pores per square centimetre, applied to the outer layer of the garment. These pores are small enough to prevent water from penetrating the garment but large enough for the water vapour from condensation and perspiration to escape.



A.B.T Xtreme is a high-performance fabric of which combines a highly durable water repellency with waterproof and windproof properties for effective protections against the hardest weather conditions. Water penetration resistance 10.000 mm and excellent breathability rating: 7.000g/m/24hrs



A.B.T Softshell is a high-performance fabric of which are comfortable and stretchable and provides a high level of waterproofness and breathability. Water penetration resistance 10.000 mm and excellent breathability rating: 5.000g/m/24hrs



A membrane that is laminated directly to the microfleece outer fabric. This allows the garment to be wind proof whilst allowing water vapour from condensation and perspiration to escape.



An outer-fabric in water repellent polyamide that is extra flexible due to a laminated polyester layer on the inside.

## TAPED SEAMS

Our seams are taped from the inside with a thin band to prevent water penetration. An important detail in a water-proof garment

## TASLAN

The outer layer of many of our jackets is in Taslan, an durable and flexible form of nylon. The inner surface of the material has a thin wind and water repellent coating.

## OTTOMAN NYLON

The outer layer of many of our jackets is in Ottoman nylon, an extremely durable and flexible form of nylon. The inner surface of the material has a thin wind and water repellent coating.



This symbol appears to indicate which products are available in women's sizes or are purely aimed at women.



This symbol appears to indicate which products are available in children's sizes.

# Custom designed clothing

The clothing your work force wears can be a part of your company's image and marketing strategy.

We offer you clothing that suits your company profile with colours, logos and details custom designed to your wishes. Our retail staff is trained to help you with alternatives and to develop ideas.

Special production runs are limited to a minimum of 150 to 300 units depending on the model. The advantage of this is that the garment is exactly as you want it and the price for embroidery, labels etcetera is kept relatively low.

The flexibility we offer you is workable and preferable for each size of company and most of the time more competitive than using standard stock garments.

Please contact your dealer for more information and suggestions.





## Product index

<i>Code</i>	<i>Description</i>	<i>Page</i>
MH-040	A.B.T. pants	59
MH-055	Womens ski pants	57
MH-062	Ski pants	57
MH-072	Softshell pants	56
MH-088	Down Parka	35
MH-107	Three-in-one jacket	32
MH-118 H+D	Mens/Womens jacket	27
MH-146	Windproof microfleece jacket	70
MH-153	Three-in-one jacket	31
MH-162 H+D	Mens/Womens softshell jacket	10
MH-170 H+D	Mens/Womens jacket	49
MH-177	Windproof microfleece body warmer	71
MH-212 H+D	Mens/Womens jacket	22
MH-238 H+D	Mens/Womens softshell jacket	15
MH-267 H+D	Mens/Womens all weather set	55
MH-273	Three-in-one jacket	30
MH-290	Pile fleece jacket	63
MH-302	Expedition jacket	34
MH-327	All weather set	53
MH-335	Pants	59
MH-352 H+D	ABT Mens/Womens jacket	19
MH-383 H+D	Mens/Womens fleece jacket	67
MH-418	Ski pants	57
MH-424	Parka	24
MH-437	Shell jacket	42
NW-454	Jacket	28

<i>Code</i>	<i>Description</i>	<i>Page</i>
MH-461H+D	Mens/Womens jacket	46
MH-475 H+D	Bounded Fleecejacket	60
MH-502 H+D	Shell jacket	44
MH-510	Business jacket	36
MH-526 H+D	Mens/Womens shell jacket	13
MH-531	Microfleece jacket	64
MH-551 H+D	Softshell jacket	6
MH-572 H+D	Mens/Womens jacket	38
MH-580 H+D	Softshell Vest	16
NW-599	Three-in-one jacket	32
MH-608 H+D	Mens/Womens twill jacket	41
MH-615	Wind sweater	62
MH-629	Finetex jacket	52
MH-634 H+D	Insulated softshell jacket	4
MH-645 H+D	Mens/Womens jacket	50
MH-649	Finetex pants	58
MH-694 H+D	Mens/Womens fleece jacket	69
MH-773	Padded Business jacket	37
MH-816 H+D	Mens/Womens jacket	20
MH-835	Taslan body warmer	29
MH-856	Microfleece jacket with lining	65
MH-913	Parka	25
MH-914	Ski pants	57
MH-938 H+D	Softshell ski jacket	8
MH-950	Parka	40

## PRODUCT CARE

Your garment will give you years of service if you follow the care instructions on the label. Always wash jackets separately having first removed the fleece lining. Always use a mild washing powder at the correct temperature shown in the garment. Finetex clothing should be re-impregnated with a substance designed for “breathable” materials available in sports shops. Fleece clothing should be allowed to ‘drip-dry’.

## NOTE

The pictures in the catalogue and the actual products may differ slightly in colour due to the methods of photography and printing used. The scenic pictures may also differ somewhat from the pictures of the products as a result of varying light conditions.



[www.matterhorn.se](http://www.matterhorn.se)

